

# Ouse Washes Section 10 Works

Stakeholder Update

June 2023

## Middle Level Barrier Bank

The Middle Level Barrier Bank is the bank of the Ouse Washes reservoir extending from Earith to Welmore Lake Sluice. In 2022 we completed the bank raising work to comply with recommendations under the Reservoirs Act 1975. As part of these works, we carried out haul road repair works between Welney bridge and the railway bridge.

We continue to carry out regular inspections and maintenance of the bank and monitor the grass growth. During the spring inspections we identified that winter flooding had caused further damage to the haul road between Welney bridge and the railway bridge.

We have reviewed the original design and have identified that we need to raise the haul road further to try and prevent this from happening again.

This work is very important as during late autumn and winter, the haul road floods, which restricts access for maintenance vehicles. We need to access the haul road in all weathers to ensure we can maintain the bank and assets during maintenance and in emergency events.

The works will start on 17 July and will take approximately 8 – 10 weeks to complete.

Our welfare cabins will be situated on the haul road (heading north) in Welney. Our staff will park along the haul road, with visitor parking at the village hall.

For security purposes the welfare cabins and the access to the haul road will have CCTV coverage, but properties will not be affected or viewed through d the CCTV.

Our contractor Jackson Civil Engineering will start setting up the compound area on the haul road in Welney from 10 July.

## Traffic Management

Our contractors are setting a two-way traffic light system to deliver the material safely to the site during working hours.

We will receive approximately 10 lorry deliveries to the access at Welney per day using the haul road. An excavator will load the material onto a dumper or similar for transport along the haul road.

To reduce disturbance in the local area material deliveries from Mepal to Welney will continue to use the existing delivery routes via the A10 to site and adhere to the 15mph haul road speed limit.

The site working hours will be Monday to Friday 8am – 6pm and Saturdays 8am – 1pm. Lorry deliveries will start from 8am.

## Sutton Gault

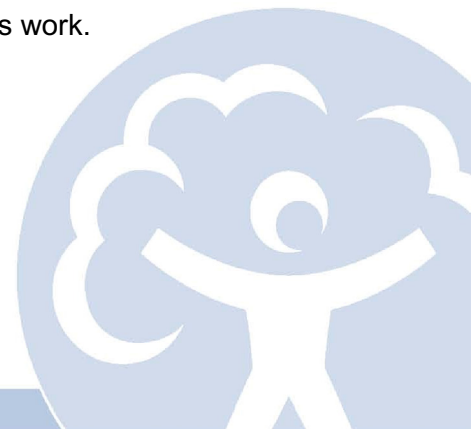
We will also be carrying out some haul road raising works at Sutton Gault south of the A142. This work will take approximately 1 - 2 weeks to complete. Material will be delivered directly from the quarry using the A142.

## Welches Dam

The ramp to Welches Dam bird hide has moved, and we will be carrying out repair work in August. This will take approximately 3 to 4 weeks to complete.

We have liaised with Natural England and RSPB before going ahead with this work.

Alongside these works we will be doing winter repair and fencing work.



## Public footpath

The public footpath that runs along the crest of the Middle Level Barrier Bank will remain open. Our contractor will divert members of the public around any localised works.

Please continue to be careful when accessing and walking on the bank and stay away from the patches of grass that haven't grown fully yet.

The reservoir bank remains in operation as normal.

## Keeping your community up to date

We would like to thank you for your co-operation and patience whilst we carry out this important work, and we will continue to work with you and the community to minimise disruption.

Our Public Liaison Officers Monica Stonham and Yazmin Parry will continue to keep you updated during the maintenance period of the project.

If you would like to find out more about the project, please use this link to our information page <https://consult.environment-agency.gov.uk/east-anglia-c-e/ouse-washes-section-10-works/>

If you have any questions or concerns, please contact our Public Liaison team on 07534 457348 or email [ousewashesprojectea@gmail.com](mailto:ousewashesprojectea@gmail.com)